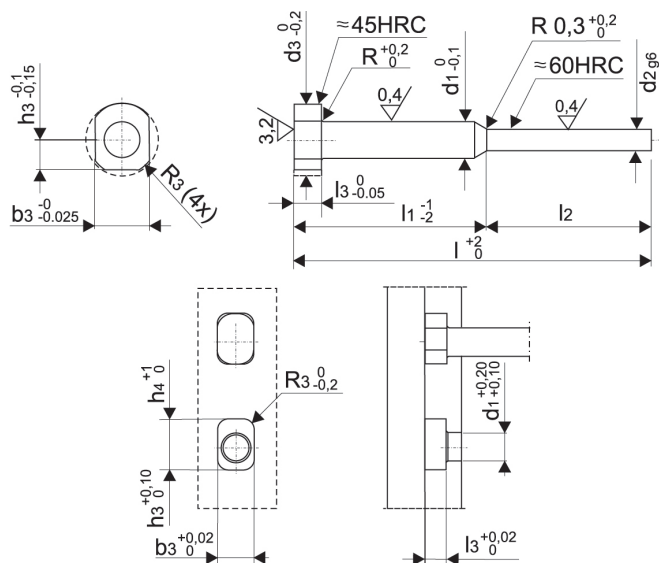


WYPYCHACZ ODSADZANY Z ZABEZPIECZENIEM
EJECTOR PIN THROUGH HARDENED WITH ANTI-TWIST LOCK



WYKONANIE: d1 – hartowany, szlifowany. Łeb wyżarzany.
VERSION: d1 – hardened through. Shaft fine ground finished (g6). Head: Annealed.

MATERIAŁ: № 1.2510 (F 522)
MATERIAL: № 1.2510 (F 522)

TWARDOŚĆ: Trzpień: (d1): 60±2 HRc
Łeb: 45±5 HRc
HARDNESS: Shaft: (d1): 60±2 HRc
Head: 45±5 HRc

ODPORNOŚĆ TEMPERATUROWA: MIN 220°C
TEMPER RESISTANCE: At least 220°C

| R | R3 | b3 | l3 | h3 | h4 | l1 | l2 | d1 | d3 | d2 | l |
|-----|-----|----|----|-----|----|-----|-----|-----|-----|-----|-----|
| 0,3 | 1,5 | 4 | 3 | 2,5 | 3 | 50 | 50 | 3 | 6 | 1,5 | 100 |
| | | | | | | | 75 | | | | 125 |
| | | | | | | 75 | 85 | 1,5 | 160 | | |
| | | | | | | | 125 | | 200 | | |
| | | | | | | 100 | 150 | 1,6 | 250 | | |
| | | | | | | | 50 | | 50 | 100 | |
| | | | | | | 50 | 75 | 1,8 | 125 | | |
| | | | | | | | 75 | | 85 | 160 | |
| | | | | | | 75 | 125 | 2 | 200 | | |
| | | | | | | | 50 | | 50 | 100 | |
| | | | | | | 50 | 75 | 2,5 | 125 | | |
| | | | | | | | 75 | | 85 | 160 | |
| | | | | | | 100 | 150 | 100 | 200 | | |
| | | | | | | | 125 | | 150 | 250 | |
| | | | | | | 160 | 155 | 125 | 315 | | |
| | | | | | | | 50 | | 50 | 100 | |
| | | | | | | 50 | 75 | 160 | 125 | | |
| | | | | | | | 75 | | 85 | 200 | |
| | | | | | | 100 | 150 | 200 | 250 | | |
| | | | | | | | 125 | | 150 | 275 | |
| | | | | | | 125 | 150 | 315 | 315 | | |
| | | | | | | | 160 | | 155 | 315 | |

PRZYKŁAD ZAMAWIANIA: Wypychacz TPZ: d2=1,6 mm
ORDER EXAMPLE: Ejector pin TPZ: d2=1,6 mm

l=125 mm
l=125 mm

Nr. katalogowy: TPZ-016125
Order number: TPZ-016125