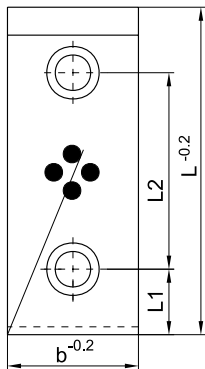
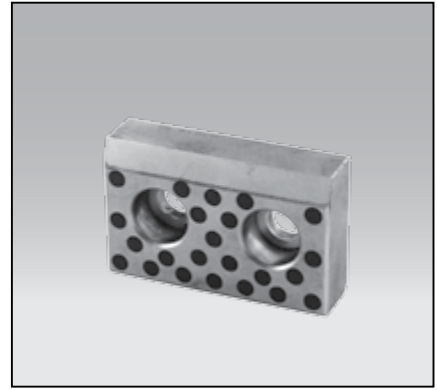
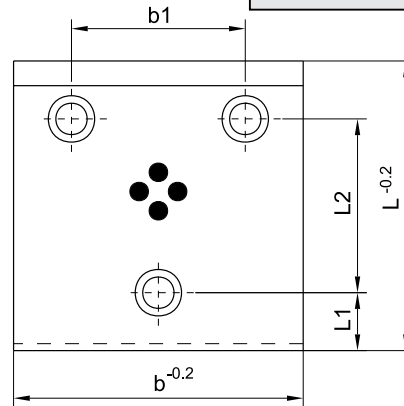


PVL  
PSL

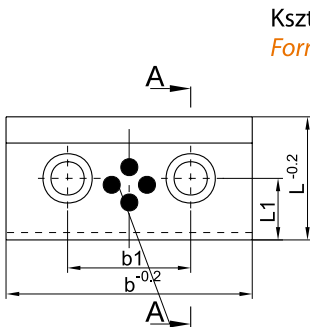
PŁYTKA SAMOSMARNA  
WEAR PLATE SELF LUBRICATING



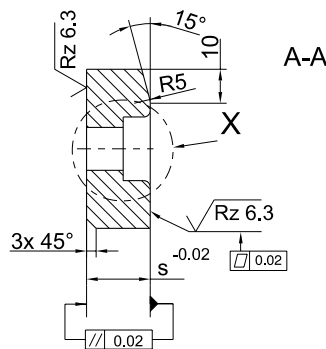
Kształt A  
Form A



Kształt C  
Form C

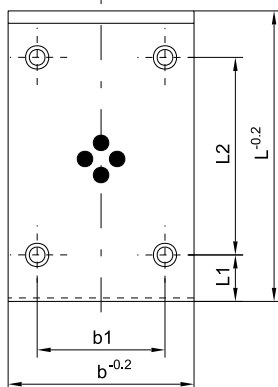
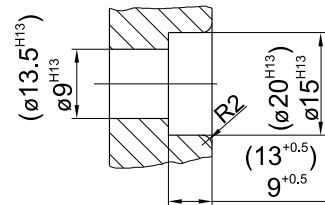


Kształt B  
Form B

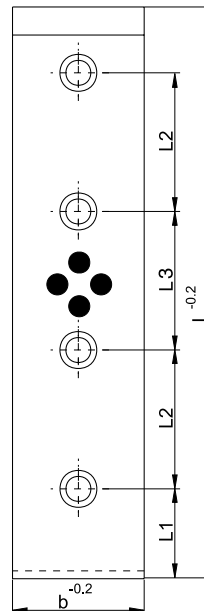


A-A

Szczegół X  
Detail X



Kształt D  
Form D



Kształt E  
Form E

b × L × s	b1 ±0,1	L1 ±0,1	L2 ±0,1	L3 ±0,1	Kształt Form	Sposób mocowania Cheese head screw		Nr kat. / Item no.*	Nr kat. / Item no.**																		
						DIN 912	Szt. / Pieces																				
50 × 80 × 20	-	25	30	-	A	M8 × 25	2	PVL-19800	PSL-19896																		
50 × 100 × 20			50					-	A	M8 × 25	2	PVL-19801	PSL-19873														
50 × 125 × 20			75									-	A	M8 × 25	2	PVL-19802	PSL-19897										
50 × 160 × 20			110													-	A	M8 × 25	2	PVL-19803	PSL-19874						
50 × 200 × 20			150																	-	A	M8 × 25	2	PVL-19804	PSL-19875		
50 × 250 × 20			60																					80	E	M12 × 25	4
50 × 300 × 20			80	90	E	M12 × 25	4																	PVL-19838			
50 × 350 × 20			100	100				E	M12 × 25	4	PVL-19839																
50 × 400 × 20			120	110							E	M12 × 25	4	PVL-19840													
50 × 450 × 20			140	120										E	M12 × 25	4	PVL-19841										
50 × 500 × 20			150	150													E	M12 × 25	4	PVL-19842							
80 × 50 × 20			30	25																-	-	B	M8 × 25	2	PVL-19805	PSL-19898	
80 × 80 × 20	30	-			B	M8 × 25	2													PVL-19806					PSL-19899		
80 × 100 × 20	50							-	B	M8 × 25										2					PVL-19807	PSL-19876	
80 × 125 × 20	75										-	B	M8 × 25												2	PVL-19808	PSL-19900
80 × 160 × 20	110													-	B	M8 × 25										2	PVL-19809
80 × 200 × 20	150																-	B	M8 × 25								2
80 × 250 × 20	170																				-	B	M8 × 25	2			
80 × 315 × 20	235	-			B	M8 × 25	2																				
80 × 250 × 20	60							80	-	E										M12 × 25							
80 × 300 × 20	80							90			-	E	M12 × 25												4		
80 × 350 × 20	100							100						-	E	M12 × 25										4	
80 × 400 × 20	120							110									-	E	M12 × 25								4
80 × 450 × 20	140		120	-				E													M12 × 25	4	PVL-19847				
80 × 500 × 20	150	150	-		E	M12 × 25	4																PVL-19848				
100 × 50 × 20	50	25							-	-										B			M12 × 25	2			
100 × 80 × 20									40		-	B	M12 × 25												2		
100 × 100 × 20									50					-	B	M12 × 25										2	
100 × 125 × 20									75								-	B	M12 × 25								2
100 × 160 × 20				110				-	B												M12 × 25	2					
100 × 200 × 20			150	-	B	M12 × 25	2																				
100 × 250 × 20			170							-										B			M12 × 25	2			
100 × 315 × 20			235								-	B	M12 × 25												2		
100 × 450 × 20			140											120	-	E										M12 × 25	
100 × 500 × 20			150											150			-	E	M12 × 25								4
125 × 50 × 20			75					25	-					-							B	M12 × 25					
125 × 80 × 20				40	-	B	M12 × 25		2																		
125 × 100 × 20	50	-		B						M12 × 25										2			PVL-19819	PSL-19886			
125 × 125 × 20	75										-	B	M12 × 25										2	PVL-19820	PSL-19906		
125 × 160 × 20	110														-	B								M12 × 25	2	PVL-19821	
125 × 200 × 20	150																-	B	M12 × 25							2	PVL-19822
125 × 250 × 20	170													-							B	M12 × 25					2
125 × 315 × 20	235				-	B	M12 × 25		2																		
125 × 450 × 20	140	120		-						E										M12 × 25							
125 × 500 × 20	150	150									-	E	M12 × 25										4				
160 × 50 × 20	110	25													-	-								B	M12 × 25		
160 × 80 × 20															40		-	B	M12 × 25							2	
160 × 100 × 20			50					-						B	M12 × 25						2	PVL-19825					PSL-19891
160 × 125 × 20			75		-	B	M12 × 25		2													PVL-19826					PSL-19909
160 × 160 × 20			110	-						B										M12 × 25		2					PVL-19827
160 × 200 × 20			150								-	B	M12 × 25										2				PVL-19828
160 × 250 × 20			170													-								B	M12 × 25		2
160 × 315 × 20			235														-	B	M12 × 25							2	

\* Mat.: Brąz aluminiowy + grafit / Aluminium bronze + graphite

\*\* Mat.: Stal + grafit / Steel + graphite