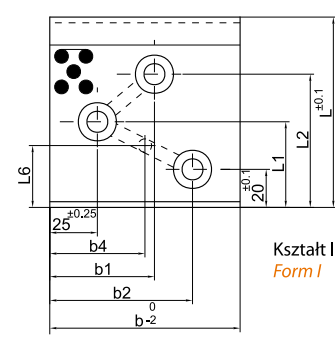
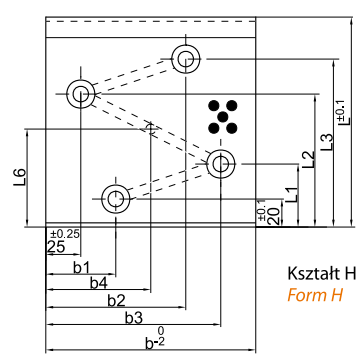
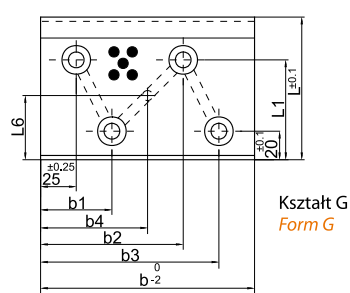
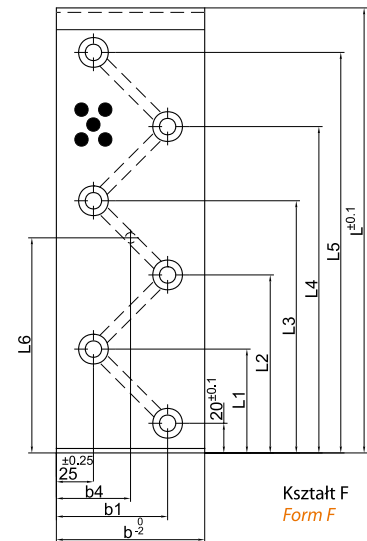
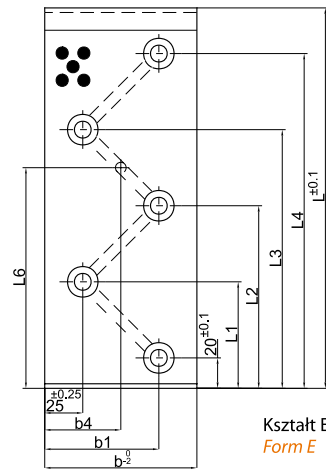
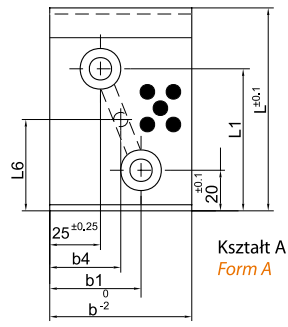
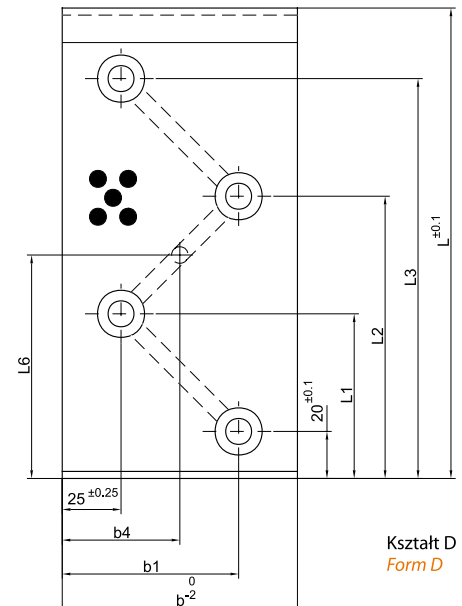
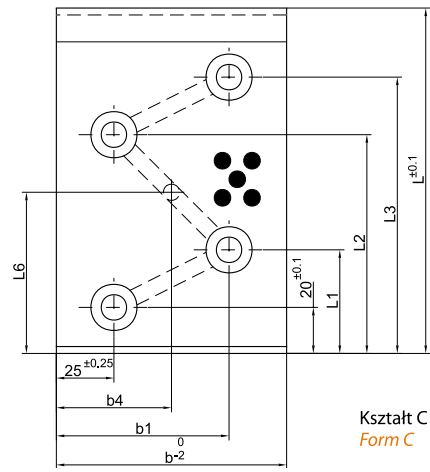
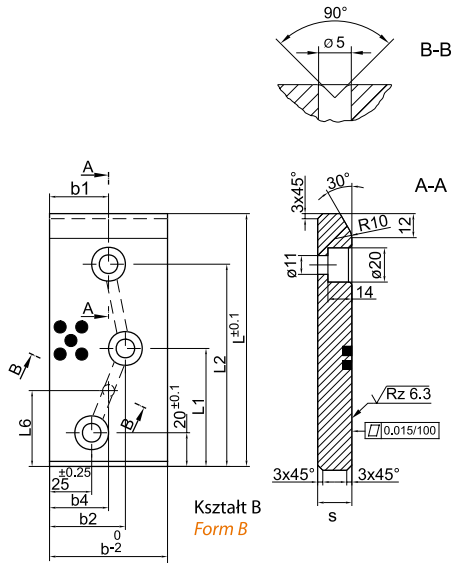
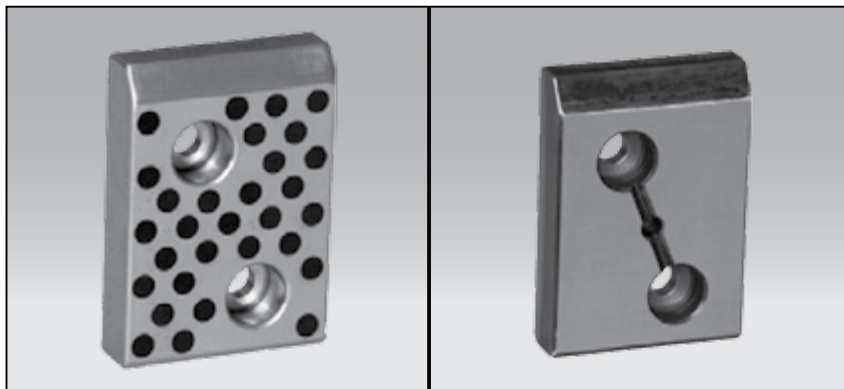


PVI
PSI

PLYTKA SAMOSMARNA
WEAR PLATE SELF LUBRICATING



PŁYTKA SAMOSMARNA
WEAR PLATE SELF LUBRICATING
PVI
PSI


* Mat.: Brąz aluminiowy + grafit
 Mat.: Aluminium bronze + graphite

** Mat.: Stal + grafit
 Mat.: Steel + graphite

$b \times L \times s$	b1 $\pm 0,1$	b2 $\pm 0,1$	b3 $\pm 0,1$	L1 $\pm 0,1$	L2 $\pm 0,1$	L3 $\pm 0,1$	L4 $\pm 0,1$	L5 $\pm 0,1$	b4 $\pm 0,25$	L6 $\pm 0,25$	Kształt Form	Sposób mocowania Cheese head screw szt. / pieces	Nr kat. / Item no.*	Nr kat. / Item no.**
70 × 100 × 20	45	-	-	70	-	-	-	-	-	45	A	2	PVI-18640	PSI-18734
70 × 150 × 20	35	45	-	70	120	-	-	-	35	45	B	3	PVI-18641	PSI-18735
70 × 200 × 20	45	-	-	70	120	170	-	-	-	95	D	4	PVI-18642	PSI-18736
100 × 100 × 20	55	75	-	45	70	-	-	-	50	32,5	I	3	PVI-18643	PSI-18737
100 × 150 × 20	75	-	-	45	95	170	-	-	-	70	C	4	PVI-18644	PSI-18738
100 × 200 × 20				70	120	170	-	-	95	D	PVI-18645		PSI-18739	
100 × 250 × 20				70	120	170	220	-	-	145	E		PVI-18646	PSI-18740
100 × 300 × 20				70	120	170	220	270	-	-	145		F	PVI-18647
150 × 100 × 20	50	100	125	70	-	-	-	-	75	45	G	4	PVI-18648	PSI-18742
150 × 150 × 20				45	95	120	-	-	-	70	H		PVI-18649	PSI-18743
150 × 200 × 20	125	-	-	70	120	170	220	270	-	145	D	5	PVI-18650	PSI-18744
150 × 250 × 20											E		PVI-18651	PSI-18745
150 × 300 × 20											F		PVI-18652	PSI-18746
200 × 100 × 20	75	125	175	70	-	-	-	-	100	45	G	4	PVI-18653	PSI-18747