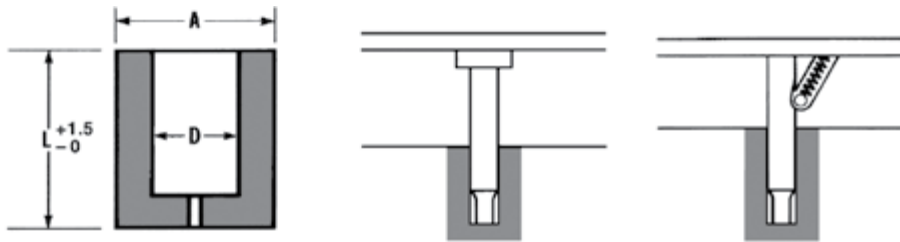
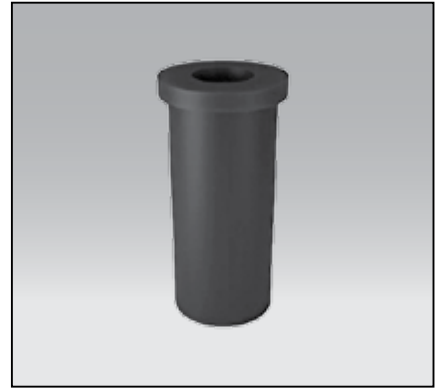


# MU

## ZRYWACZE ELASTOMEROWE URETHANE STRIPPERS



Szybko i łatwo montowalne / Quickly and easily mounted



Typ Type	D	A	L	Średni nacisk przy ugięciu Approximate stripping pressure Available at deflection indicated		
				3,0	6,5	9,5
MU06	6,0	19,0	45	1324	2256	—
			53	1079	1863	2354
			71	686	1079	1765
MU08	8,0	21,0	45	1471	2207	—
			53	1324	1961	2942
			71	981	1618	2648
MU10	10,0	23,0	45	1716	2795	—
			53	1422	2452	3187
			56	1422	2452	3187
			71	1128	2010	2697
MU13	13,0	26,0	45	2109	3334	—
			53	1471	2354	3432
			56	1471	2354	2942
			71	1275	1961	2452
MU16	16,0	30,0	45	2354	3825	—
			53	2158	3531	4511
			56	2158	3531	4511
			71	1814	2942	3825
MU20	20,0	38,0	45	2452	3923	—
			53	2158	3629	5590
			71	1618	2942	4658
MU25	25,0	50,0	45	9317	14318	—
			53	7355	11572	15985
			71	4904	8336	13485
MU32	32,0	60,0	45	13352	20535	—

Pasuje do wszystkich komercyjnych stempli. Std. twardość 95A.  
Will fit all standard commercial punches. Std. durometer 95A.

Przykład zamawiania:  
Order example:

Nr kat. / Item no. L

---

M2 — 53