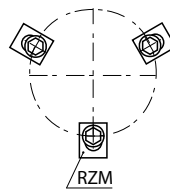
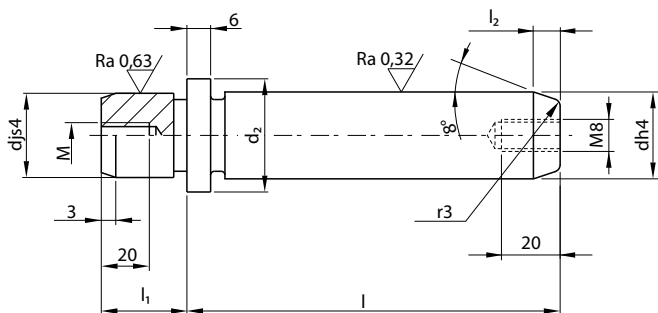


RSK

SŁUP PROWADZĄCY GUIDE PILLAR



RZM
patrz str. A/8
see page A/8



Mat.: 1.1221
Powierzchnia hartowana indukcyjnie 62±2 HRC
Surface induction hardened 62±2 HRC

ISO 9182

d	l	Nr kat. / Item no.	
16/15	100	RSK-16100	RSK-15100
	112	RSK-16112	RSK-15112
	125	RSK-16125	RSK-15125
	140	RSK-16140	RSK-15140
	160	RSK-16160	RSK-15160
	180	RSK-16180	RSK-15180
	200	RSK-16200	RSK-15200
20/19	100	RSK-20100	RSK-19100
	112	RSK-20112	RSK-19112
	125	RSK-20125	RSK-19125
	140	RSK-20140	RSK-19140
	160	RSK-20160	RSK-19160
	180	RSK-20180	RSK-19180
25/24	200	RSK-20200	RSK-19200
	100	RSK-25100	RSK-24100
	112	RSK-25112	RSK-24112
	125	RSK-25125	RSK-24125
	140	RSK-25140	RSK-24140
	160	RSK-25160	RSK-24160
	180	RSK-25180	RSK-24180
	200	RSK-25200	RSK-24200
	224	RSK-25224	RSK-24224
250	RSK-25250	RSK-24250	
32/30	112	RSK-32112	RSK-30112
	125	RSK-32125	RSK-30125
	140	RSK-32140	RSK-30140
	160	RSK-32160	RSK-30160
	180	RSK-32180	RSK-30180
	200	RSK-32200	RSK-30200
	224	RSK-32224	RSK-30224
	250	RSK-32250	RSK-30250
	280	RSK-32280	RSK-30280
	315	RSK-32315	RSK-30315

d	l	Nr kat. / Item no.		
40/38	125	RSK-40125	RSK-38125	
	140	RSK-40140	RSK-38140	
	160	RSK-40160	RSK-38160	
	180	RSK-40180	RSK-38180	
	200	RSK-40200	RSK-38200	
	224	RSK-40224	RSK-38224	
	250	RSK-40250	RSK-38250	
	280	RSK-40280	RSK-38280	
	315	RSK-40315	RSK-38315	
	355	RSK-40355	RSK-38355	
	50/48	140	RSK-50140	RSK-48140
		160	RSK-50160	RSK-48160
		180	RSK-50180	RSK-48180
200		RSK-50200	RSK-48200	
224		RSK-50224	RSK-48224	
250		RSK-50250	RSK-48250	
280		RSK-50280	RSK-48280	
315		RSK-50315	RSK-48315	
355		RSK-50355	RSK-48355	
400		RSK-50400	RSK-48400	
63/60	160	RSK-63160	RSK-60160	
	180	RSK-63180	RSK-60180	
	200	RSK-63200	RSK-60200	
	224	RSK-63224	RSK-60224	
	250	RSK-63250	RSK-60250	
	280	RSK-63280	RSK-60280	
	315	RSK-63315	RSK-60315	
	355	RSK-63355	RSK-60355	
	400	RSK-63400	RSK-60400	
	80	200	RSK-80200	-
224		RSK-80224		
250		RSK-80250		
280		RSK-80280		
315		RSK-80315		
355		RSK-80355		
400		RSK-80400		

d	d ₂	l ₁	l ₂	M
16/15	22	20	4	M8
20/19	25	23	4	
25/24	32	30	6	
32/30	40	37	6	
40/38	50	37	6	
50/48	63	47	8	
63/60	80	47	8	
80	95	60	8	M12