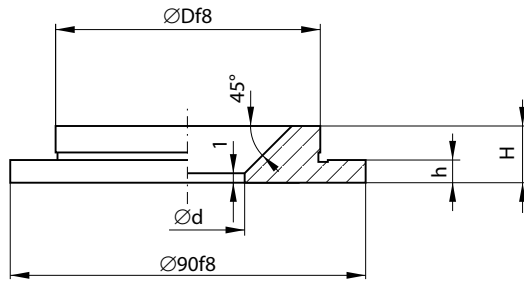
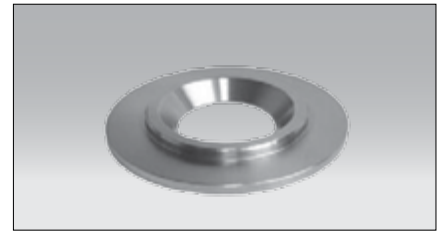


# FAA



# PIERŚCIEŃ CENTRUJĄCY LOCATING RING



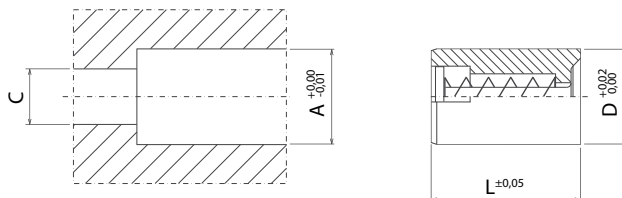
Mat.: 1.1191

d	h	D	H	Nr kat. / Item no.	
36	4	60	8	FAA-060080	
26	7		11	FAA-060110	
	9		13	FAA-060130	
36	4	80	8	FAA-080080	
26	7		11	FAA-080110	
	9		13	FAA-080130	
36	4	100	12	FAA-100120	
	7		15	FAA-100150	
	9		17	FAA-100170	
	11		19	FAA-100190	
	12,5		21	FAA-100210	
	4		110	12	FAA-110120
	7			15	FAA-110150

d	h	D	H	Nr kat. / Item no.	
36	9	110	17	FAA-110170	
	12,5		21	FAA-110210	
	7	120	15	FAA-120150	
	9		17	FAA-120170	
	11		19	FAA-120190	
	12,5		21	FAA-120210	
	4	125	12	FAA-125120	
	7		15	FAA-125150	
	9		17	FAA-125170	
	11		19	FAA-125190	
	12,5		21	FAA-125210	
	4		130	12	FAA-130120
			140	12	FAA-140120

d	h	D	H	Nr kat. / Item no.	
36	4	150	12	FAA-150120	
			17	FAA-160120	
	9	160	17	FAA-160170	
			19	FAA-160190	
			21	FAA-160210	
	4	175	12	FAA-175120	
	1		15	FAA-175150	
	9		17	FAA-175170	
	11		19	FAA-175190	
	12,5		21	FAA-175210	
	4		180	12	FAA-180120
			200	12	FAA-200120
		250	12	FAA-250120	

# VKT



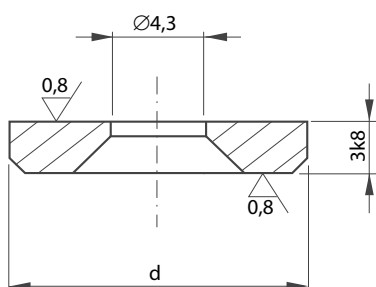
D	L	A	C	Nr kat. / Item no.
8	14	8	5	VKT-08
10	14	10	8	VKT-10
12	18	12	8	VKT-12
16	20	16	8	VKT-16
20	20	20	16	VKT-20
25	20	25	18	VKT-25

# ZAWÓR POWIETRZNY AIR VALVE



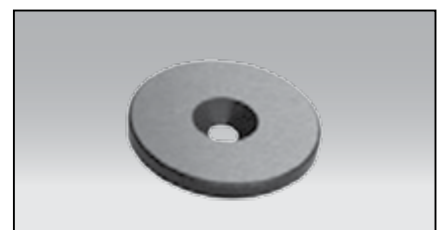
Mat.: 1.4021

# FPC



d	Nr kat. / Item no.
18	FPC-1803
28	FPC-2803

# PODKŁADKA OPOROWA SUPPORT WASHER



Mat.: 1.1191