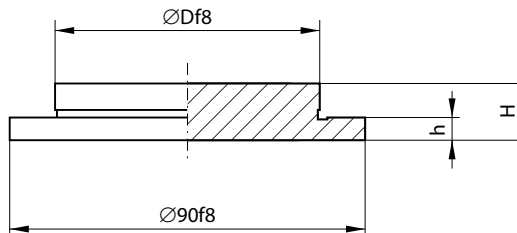


PIERŚCIEŃ CENTRUJĄCY
LOCATING RING

FAB



Mat.: 1.1191



h	D	H	Nr kat. / Item no.	
4	60	8	FAB-060080	
7		11	FAB-060110	
9		13	FAB-060130	
4	80	8	FAB-080080	
7		11	FAB-080110	
9		13	FAB-080130	
4	100	12	FAB-100120	
7		15	FAB-100150	
9		17	FAB-100170	
11		19	FAB-100190	
12,5		21	FAB-100210	
4		110	12	FAB-110120
7			15	FAB-110150
9	17		FAB-110170	

h	D	H	Nr kat. / Item no.
11	110	19	FAB-110190
12,5		21	FAB-110210
4	120	12	FAB-120120
7		15	FAB-120150
9		17	FAB-120170
11		19	FAB-120190
12,5	125	21	FAB-120210
4		12	FAB-125120
7		15	FAB-125150
9		17	FAB-125170
11		19	FAB-125190
12,5	21	FAB-125210	
4	140	12	FAB-140120

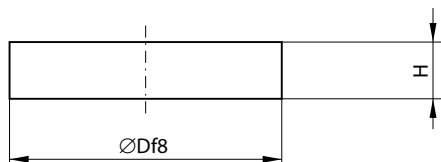
h	D	H	Nr kat. / Item no.
4	150	12	FAB-150120
4	160	12	FAB-160120
7		15	FAB-160150
9		17	FAB-160170
11	175	19	FAB-160190
12,5		21	FAB-160210
4		12	FAB-175120
7	175	15	FAB-175150
9		17	FAB-175170
11		19	FAB-175190
12,5		21	FAB-175210
4	200	12	FAB-200120
4	250	12	FAB-250120

PIERŚCIEŃ CENTRUJĄCY
LOCATING RING

FAC



Mat.: 1.1191



D	H	Nr kat. / Item no.
40	6	FAC-040060
	9	FAC-040090
60	8	FAC-060080
	11	FAC-060110
	13	FAC-060130
80	8	FAC-080080
	15	FAC-080150
	17	FAC-080170
90	12	FAC-090120
	15	FAC-090150
	17	FAC-090170
	19	FAC-090190
	21	FAC-090210

D	H	Nr kat. / Item no.
100	12	FAC-100120
	21	FAC-100210
110	12	FAC-110120
	21	FAC-110210
120	12	FAC-120120
	21	FAC-120210
125	8	FAC-125080
	12	FAC-125120
	18	FAC-125180
	21	FAC-125210
130	12	FAC-130120
140	12	FAC-140120

D	H	Nr kat. / Item no.
150	12	FAC-150120
	21	FAC-150210
160	8	FAC-160080
	12	FAC-160120
160	20	FAC-160200
	23	FAC-160230
175	12	FAC-175120
	21	FAC-175210
200	12	FAC-200120
	20	FAC-200200
200	23	FAC-200230
	250	12
23		FAC-250230