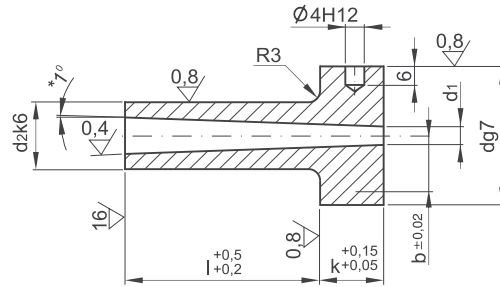


TULEJA WTRYSKOWA
SPRUE BUSHING

KTC



Mat.: 1.2826
55±2 HRC

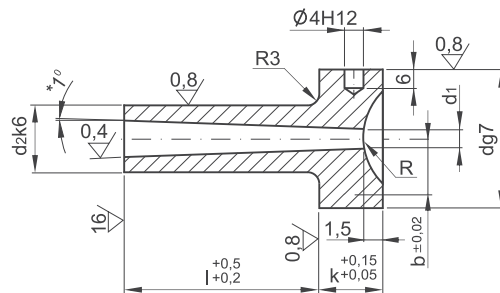
* Na życzenie oferujemy tuleje z kątem 0,5°
* Hole inclination 0,5° on request

d ₂	d ₁	l	d	k	b	Nr kat. / Item no.
12	2,5	22	28	13	11	KTC-122522
		27				KTC-122527
		36				KTC-122536
		46				KTC-122546
	3,5	22				KTC-123522
		27				KTC-123527
		36				KTC-123536
		46				KTC-123546
18	3	27	38	18	11	KTC-123556
		36				KTC-183027
		46				KTC-183036
		56				KTC-183046

d ₂	d ₁	l	d	k	b	Nr kat. / Item no.
18	3	56	38	18	15	KTC-183056
		76				KTC-183076
		96				KTC-183096
		116				KTC-183116
	4	27				KTC-184027
		36				KTC-184036
		46				KTC-184046
		56				KTC-184056
18	3	76	38	18	15	KTC-184076
		96				KTC-184096
		116				KTC-184116

TULEJA WTRYSKOWA
SPRUE BUSHING

KTD



R = 15,5						
d ₂	d ₁	l	d	k	b	Nr kat. / Item no.
12	2,5	22	28	13	11	KTD-122522-15,5
		27				KTD-122527-15,5
		36				KTD-122536-15,5
		46				KTD-122546-15,5
	3,5	22				KTD-123522-15,5
		27				KTD-123527-15,5
		36				KTD-123536-15,5
		46				KTD-123546-15,5
18	3	56	38	18	15	KTD-123556-15,5
		27				KTD-183027-15,5
		36				KTD-183036-15,5
		46				KTD-183046-15,5
	4	56				KTD-183056-15,5
		76				KTD-183076-15,5
		96				KTD-183096-15,5
		116				KTD-183116-15,5
18	3	27	38	18	15	KTD-184027-15,5
		36				KTD-184036-15,5
		46				KTD-184046-15,5
		56				KTD-184056-15,5
	4	76				KTD-184076-15,5
		96				KTD-184096-15,5
		116				KTD-184116-15,5

R = 40						
d ₂	d ₁	l	d	k	b	Nr kat. / Item no.
12	2,5	22	28	13	11	KTD-122522-40
		27				KTD-122527-40
		36				KTD-122536-40
		46				KTD-122546-40
	3,5	22				KTD-123522-40
		27				KTD-123527-40
		36				KTD-123536-40
		46				KTD-123546-40
18	3	56	38	18	15	KTD-123556-40
		27				KTD-183027-40
		36				KTD-183036-40
		46				KTD-183046-40
	4	56				KTD-183056-40
		76				KTD-183076-40
		96				KTD-183096-40
		116				KTD-183116-40
18	3	27	38	18	15	KTD-184027-40
		36				KTD-184036-40
		46				KTD-184046-40
		56				KTD-184056-40
	4	76				KTD-184076-40
		96				KTD-184096-40
		116				KTD-184116-40